

EVIO Labs Medford (pka Kenevir Research)
 540 East Vilas Road, Suite F, Central Point, OR 97502
 541-668-7444 / OLCC 010-1001626980D / www.EVIOLabs.com

Lifter

Informational Testing

Confident Cannabis ID: 1811KR0086.2726

Sample ID: M180918-02

Matrix: Hemp

METRC Batch #:

Sampling Method/SOP: SOP.T.20.010

Date Sampled: 11/27/18 09:00

Date Accepted: 11/27/18

Results Valid Until: 11/27/19

Harvest/Process Lot ID:

Batch ID:

Batch Size:

Unit for Sale:

Harvest/Production Date:



Cannabinoid Analysis

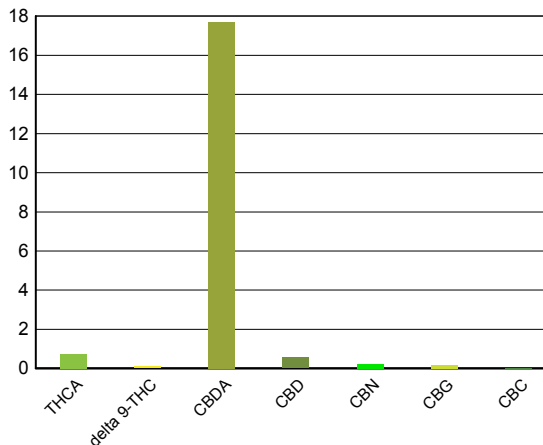
FOR INFORMATIONAL USE ONLY - NOT FOR REGULATORY PURPOSES

Date/Time Extracted: 11/28/18 11:40

Analysis Method/SOP: SOP.T.40.020

Date/Time Analyzed: 11/28/18 19:53

Cannabinoids	LOQ(%)	mg/g	% weight	Cannabinoids Profile
Total THC <small>((THCA*0.877)+Δ9THC)</small>		7.46	0.746	
Total CBD <small>((CBDA*0.877)+CBD)</small>		161	16.1	
THCA	0.0500	7.39	0.739	
delta 9-THC	0.0500	0.985	0.0985	
delta 8-THC	0.0500	< LOQ	< LOQ	
CBDA	0.0500	177	17.7	
CBD	0.0500	5.57	0.557	
CBN	0.0500	2.12	0.212	
CBG	0.0500	1.71	0.171	
CBC	0.0500	< LOQ	< LOQ	
Sum of tested Cannabinoids	0.0500	172	17.2	



Moisture Content

Date/Time Analyzed: 11/27/18 14:30
 Analysis Method/SOP: SOP.T.40.010

Moisture: 8.87 %

"Total THC" and "Total CBD" are calculated values and are an Oregon reporting requirement (OAR 333-064-0100). For Cannabinoid analysis, only delta 9-THC, THCA, CBD, CBDA are ORELAP accredited analytes. Cannabinoid values reported for plant matter are dry weight corrected; Oregon Water Activity action level is 0.65Aw; Samples above limit will be highlighted RED; FD = Field Duplicate; LOQ = Limit of Quantitation.

Ian Riversong
 Laboratory Director - 12/11/2018

EVIO Labs Medford (pka Kenevir Research)
 540 East Vilas Road, Suite F, Central Point, OR 97502
 541-668-7444 / OLCC 010-1001626980D / www.EVIOLabs.com

FOR INFORMATIONAL USE ONLY - NOT FOR REGULATORY PURPOSES

Lifter

Kelley Thomas

Informational Testing

Sample ID: M180918-02 METRC Batch #:

Matrix: Hemp

Date Sampled: 11/27/18 09:00

Date Accepted: 11/27/18

Results Valid Until: 11/27/19

Batch ID:

Batch Size:

Sampling Method/SOP: SOP.T.20.010

Terpene Analysis


Date/Time Extracted: 12/03/18 10:56

Analysis Method/SOP: SOP.T.40.090

Date/Time Analyzed: 12/05/18 19:31

Analyte	LOQ (mg/g)	Mass (mg/g)	Mass (%)	Analyte	LOQ (mg/g)	Mass (mg/g)	Mass (%)
alpha-Pinene	0.200	1.11	0.111	beta-Pinene	0.200	0.418	0.0418
Camphene	0.200	< LOQ	< LOQ	Sabinene	0.200	0.457	0.0457
Sabinene hydrate	0.200	< LOQ	< LOQ	beta-Myrcene	0.200	4.31	0.431
p-Mentha-1,5-diene	0.200	< LOQ	< LOQ	(+)-3-Carene	0.200	< LOQ	< LOQ
alpha-Terpinene	0.200	< LOQ	< LOQ	gamma-Terpinene	0.200	< LOQ	< LOQ
Limonene	0.200	0.575	0.0575	Eucalyptol	0.200	< LOQ	< LOQ
Guaiol	0.200	1.08	0.108	Terpinolene	0.200	< LOQ	< LOQ
Linalool	0.200	0.417	0.0417	Camphor	0.200	< LOQ	< LOQ
(+)-Camphor	0.200	< LOQ	< LOQ	(-)-Camphor	0.200	< LOQ	< LOQ
Isopulegol	0.200	< LOQ	< LOQ	(+)-Borneol	0.200	< LOQ	< LOQ
(-)-Borneol	0.200	< LOQ	< LOQ	Hexahydrothymol	0.200	< LOQ	< LOQ
Geraniol	0.200	< LOQ	< LOQ	(+)-Pulegone	0.200	< LOQ	< LOQ
Nerol	0.200	< LOQ	< LOQ	cis-Nerolidol	0.200	< LOQ	< LOQ
trans-Nerolidol	0.200	0.220	0.022	Geranyl acetate	0.200	< LOQ	< LOQ
alpha-Cedrene	0.200	< LOQ	< LOQ	trans-Caryophyllene	0.200	2.41	0.241
beta-Caryophyllene	0.200	0.320	0.032	alpha-Humulene	0.200	1.20	0.12
Valencene	0.200	< LOQ	< LOQ	alpha-Farnesene	0.200	2.10	0.21
beta-Farnesene	0.200	1.10	0.11	Cedrol	0.200	< LOQ	< LOQ
alpha-Bisabolol	0.200	0.905	0.0905	Fenchone	0.200	< LOQ	< LOQ
Fenchyl Alcohol	0.200	< LOQ	< LOQ	trans, beta- Ocimene	0.200	< LOQ	< LOQ
beta, cis- Ocimene	0.200	< LOQ	< LOQ	Terpineol	0.200	< LOQ	< LOQ
Total (Sum):						16.62	1.66

Analysis performed on GCMS with confirmation ion identification. Terpene analysis is not ORELAP accredited.
 Results reported as dry weight. LOQ = Limit of Quantitation ;Terpene analysis performed in conjunction with EVIO Labs

 Ian Riversong
 Laboratory Director - 12/11/2018

EVIO Labs Medford (pka Kenevir Research)
 540 East Vilas Road, Suite F, Central Point, OR 97502
 541-668-7444 / OLCC 010-1001626980D / www.EVIOLabs.com

Quality Control

Batch: M18K105 - SOP.T.30.050 Prep for Cannabinoids

Blank(M18K105-BLK1)			Extracted: 11/28/18 11:40		Analyzed: 11/28/18 18:43		
Analyte	Result	LOQ	Recovery Limits	Analyte	Result	LOQ	Recovery Limits
THCA	< LOQ	0.0500 (%)	< LOQ	delta 9-THC	< LOQ	0.0500 (%)	< LOQ
delta 8-THC	< LOQ	0.0500 (%)	< LOQ	CBDA	< LOQ	0.0500 (%)	< LOQ
CBD	< LOQ	0.0500 (%)	< LOQ	CBG	< LOQ	0.0500 (%)	< LOQ
CBN	< LOQ	0.0500 (%)	< LOQ	CBC	< LOQ	0.0500 (%)	< LOQ
Sum of tested Cannabinoid:	< LOQ	0.0500 (%)	< LOQ				

LCS(M18K105-BS1)			Extracted: 11/28/18 11:40		Analyzed: 11/28/18 19:00		
Analyte	% Recovery	LOQ	Recovery Limits	Analyte	% Recovery	LOQ	Recovery Limits
THCA	107	(%)	70-130	delta 9-THC	103	(%)	70-130
CBDA	106	(%)	70-130	CBD	105	(%)	70-130



Ian Riversong
 Laboratory Director - 12/11/2018